

LIV



SPECIFICATION

Material Type	Fabrics	Weight	460 g/m2
Supplier	Bogesunds	Durability	> 50,000 turns Martindale
Pattern	Melange	Lightfastness	5-7 (scale 1-8)
Composition	100% Trevira CS		

ABOUT

With Liv, you get a fabric that looks like a classic linen, but what you get is a 60 °C washable fabric weave in Trevira CS that meets the market's stringent requirements. The color scale is natural and tranquil, making this fabric a good choice for creating beautiful and inviting interior design. The wide color scale, design and wash-ability make this fabric suitable in all environments, even tough as school and healthcare.

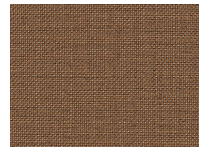
COLOURS IN THE LIV SERIES



Liv 7027



Liv 7028



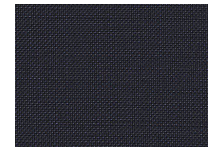
Liv 7033



Liv 7041



Liv 7052



Liv 7059



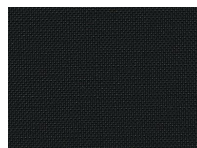
Liv 7060



Liv 7071



Liv 7091



Liv 7099

LIV



LIV FULFILLS THE FOLLOWING STANDARDS:

- | | | | |
|---|------------------------------------|------------------------------------|-------------------------------------|
| ✓ EN ISO 12947-2+AC 12
KPA
EN ISO 12947-2+AC 12 KPa | ✓ EN ISO 12945-2
EN ISO 12945-2 | ✓ EN ISO 105-B02
EN ISO 105-B02 | ✓ EN ISO 13936-2
EN ISO 13936-2 |
| ✓ EN ISO 105-X12
EN ISO 105-X12 | ✓ EN ISO 105-D02
EN ISO 105-D02 | ⊖ EN ISO 105-D01
EN ISO 105-D01 | ✓ ISO ISO 105-C06
EN ISO 105-C06 |
| ✓ ISO ISO 105-E16
EN ISO 105-E16 | ✓ EN ISO 105-E04
EN ISO 105-E04 | ✓ EN 1021-1:2014
EN 1021-1:2014 | ✓ EN 1021:2:2014
EN 1021-2:2014 |

INSPIRATION

