

# REMIX



DK/016/024

## SPECIFICATION

<b>Material Type</b>	Fabrics	<b>Weight</b>	300 g/m <sup>2</sup>
<b>Supplier</b>	Kvadrat	<b>Durability</b>	> 50,000 turns Martindale
<b>Pattern</b>	Melange	<b>Lightfastness</b>	5
<b>Composition</b>	90% wool, 10% nylon		

## ABOUT

Remix lets you create a sophisticated expression in your interior. This soft and finely marled wool fabric has a colour scale with depth and character. Mix the strong and the light colours to create interesting combinations. Remix works well in all types of working environments or public areas.

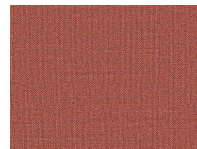
## COLOURS IN THE REMIX SERIES



Remix 3921



Remix 3924



Remix 3933



Remix 3952



Remix 3959



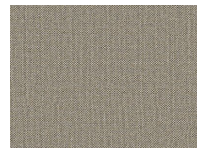
Remix 3961



Remix 3973



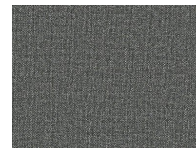
Remix 3977



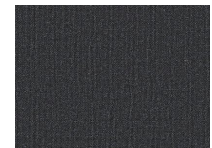
Remix 3986



Remix 3990



Remix 3994



Remix 3998

# REMIX



## REMIX FULFILLS THE FOLLOWING STANDARDS:

- |   |                                    |                                    |                                     |
|---|------------------------------------|------------------------------------|-------------------------------------|
| ✓ EN ISO 12947-2+AC 12<br>KPA<br>EN ISO 12947-2+AC 12 KPa | ✓ EN ISO 12945-2<br>EN ISO 12945-2 | ✓ EN ISO 105-B02<br>EN ISO 105-B02 | ✓ EN ISO 13936-2<br>EN ISO 13936-2  |
| ✓ EN ISO 105-X12<br>EN ISO 105-X12                        | ✓ EN ISO 105-D02<br>EN ISO 105-D02 | ✓ EN ISO 105-D01<br>EN ISO 105-D01 | ⊖ ISO ISO 105-C06<br>EN ISO 105-C06 |
| ✓ ISO ISO 105-E16<br>EN ISO 105-E16                       | ✓ EN ISO 105-E04<br>EN ISO 105-E04 | ✓ EN 1021-1:2014<br>EN 1021-1:2014 | ✓ EN 1021:2:2014<br>EN 1021-2:2014  |

## INSPIRATION

