

RUSTICO



SPECIFICATION

| | | | |
|----------------------|-----------------|----------------------|---------------------------|
| Material Type | Fabrics | Weight | 400 g/m ² |
| Supplier | Fidivi | Durability | > 50 000 turns Martindale |
| Pattern | Melange | Lightfastness | ≥6 |
| Composition | 100% Trevira CS | | |

ABOUT

Rustico is a multicoloured fabric in a modern retro design, with a nice colour scale and melange structure. It is washable at 60°C and is a good choice for offices and schools, as it is woven with the flame-retardant Trevira CS fabric. Rustico's design makes it easy to match with other fabrics, while still offering a dirt-resistant finish.

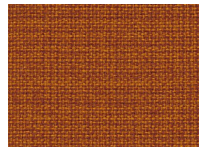
COLOURS IN THE RUSTICO SERIES



Rustico 5513



Rustico 5530



Rustico 5533



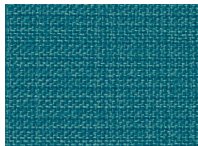
Rustico 5542



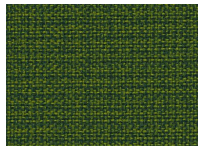
Rustico 5549



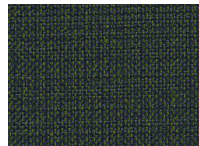
Rustico 5552



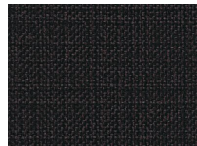
Rustico 5560



Rustico 5570



Rustico 5579



Rustico 5599

RUSTICO



RUSTICO FULFILLS THE FOLLOWING STANDARDS:

- | | | | |
|---|------------------------------------|------------------------------------|-------------------------------------|
| ✓ EN ISO 12947-2 + AC 12 KPA EN ISO 12947-2+AC 12 KPa | ✓ EN ISO 12945-2 EN ISO 12945-2 | ✓ EN ISO 105-B02 EN ISO 105-B02 | ✓ EN ISO 13936-2 EN ISO 13936-2 |
| ✓ EN ISO 105-X12 EN ISO 105-X12 | ✓ EN ISO 105-D02 EN ISO 105-D02 | ✓ EN ISO 105-D01 EN ISO 105-D01 | ✓ ISO ISO 105-C06 EN ISO 105-C06 |
| ✓ ISO ISO 105-E16 EN ISO 105-E16 | ✓ EN ISO 105-E04 EN ISO 105-E04 | ✓ EN 1021-1:2014 EN 1021-1:2014 | ✓ EN 1021-2:2014 EN 1021-2:2014 |

INSPIRATION

