

STEELCUT



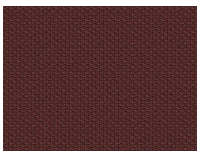
SPECIFICATION

Material Type	Fabrics	Weight	589 g/m2
Supplier	Kvadrat	Durability	> 50 000 cycles Martindale
Pattern	Melange	Lightfastness	5-7
Composition	90% New Wool, 10% Nylon		

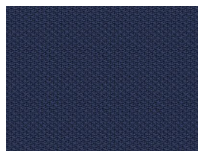
ABOUT

With Steelcut and Steelcut Trio, you can create life and energy in different environments. The fabric is available in both single-coloured and melange finish and, as a result, works well for mixing and matching together. The exquisitely colour scale and classic design make Steelcut and Steelcut trio suitable for use in offices, lounges, hotels, receptions and universities.

COLOURS IN THE STEELCUT SERIES



Steelcut 4829



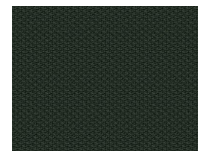
Steelcut 4859



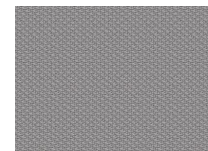
Steelcut 4874



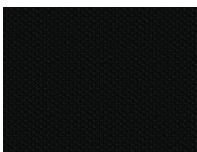
Steelcut 4877



Steelcut 4879



Steelcut 4891



Steelcut 4899

STEELCUT



STEELCUT FULFILLS THE FOLLOWING STANDARDS:

- | | | | |
|---|------------------------------------|------------------------------------|-------------------------------------|
| ✓ EN ISO 12947-2+AC 12
KPA
EN ISO 12947-2+AC 12 KPa | ✓ EN ISO 12945-2
EN ISO 12945-2 | ✓ EN ISO 105-B02
EN ISO 105-B02 | ✓ EN ISO 13936-2
EN ISO 13936-2 |
| ✓ EN ISO 105-X12
EN ISO 105-X12 | ✓ EN ISO 105-D02
EN ISO 105-D02 | ✓ EN ISO 105-D01
EN ISO 105-D01 | ⊖ ISO ISO 105-C06
EN ISO 105-C06 |
| ✓ ISO ISO 105-E16
EN ISO 105-E16 | ✓ EN ISO 105-E04
EN ISO 105-E04 | ✓ EN 1021-1:2014
EN 1021-1:2014 | ✓ EN 1021:2:2014
EN 1021-2:2014 |

INSPIRATION

