

# STEP MELANGE



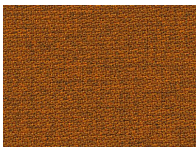
## SPECIFICATION

|                      |                 |                      |                            |
|----------------------|-----------------|----------------------|----------------------------|
| <b>Material Type</b> | Fabrics         | <b>Weight</b>        | 336                        |
| <b>Supplier</b>      | Gabriel         | <b>Durability</b>    | > 50 000 cycles Martindale |
| <b>Pattern</b>       | Melange         | <b>Lightfastness</b> | ≥5                         |
| <b>Composition</b>   | 100% Trevira CS |                      |                            |

## ABOUT

Step Melange is a good choice for furniture that has to cope with tough environments. Its high resistance to dirt makes it a good choice even in user-intensive environments such as schools, hotels and health care facilities. The fabric is also washable at 60°C and woven with the flame-retardant Trevira CS fabric, which complies with the most stringent fire protection requirements on the market. The colour palette is inspirational, with a mix of nature's own bright tones.

## COLOURS IN THE STEP MELANGE SERIES



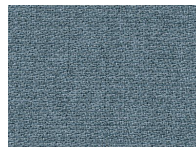
Step Melange 5023



Step Melange 5030



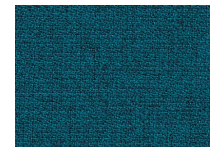
Step Melange 5049



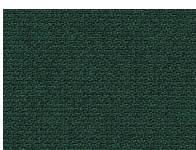
Step Melange 5051



Step Melange 5059



Step Melange 5069



Step Melange 5072



Step Melange 5075



Step Melange 5092



Step Melange 5098

# STEP MELANGE



## STEP MELANGE FULFILLS THE FOLLOWING STANDARDS:

- |   |                                    |                                    |                                     |
|---|------------------------------------|------------------------------------|-------------------------------------|
| ✓ EN ISO 12947-2+AC 12<br>KPA<br>EN ISO 12947-2+AC 12 KPa | ✓ EN ISO 12945-2<br>EN ISO 12945-2 | ✓ EN ISO 105-B02<br>EN ISO 105-B02 | ✓ EN ISO 13936-2<br>EN ISO 13936-2  |
| ✓ EN ISO 105-X12<br>EN ISO 105-X12                        | ✓ EN ISO 105-D02<br>EN ISO 105-D02 | ✓ EN ISO 105-D01<br>EN ISO 105-D01 | ✓ ISO ISO 105-C06<br>EN ISO 105-C06 |
| ✓ ISO ISO 105-E16<br>EN ISO 105-E16                       | ✓ EN ISO 105-E04<br>EN ISO 105-E04 | ✓ EN 1021-1:2014<br>EN 1021-1:2014 | ✓ EN 1021:2:2014<br>EN 1021-2:2014  |

## INSPIRATION

