

Plus[6] & Plus[8]



Plus[6]

The best way to sit ergonomically correctly is to keep the body in motion. Sound strange? It's not. Plus[6] with its FreeFloat tilt encourages movement. The seat and back move independently of each other at your slightest command. Regardless of whether you want to lean forward in concentration or lean back and relax. Add adjustment functions for seat depth, sitting height and backrest height and you get an ergonomic hit. Choose between two different back heights and two different armrests. Add a jointed headrest, SafeBack and Motif or Contour.

Plus[8]

Even in its basic version, the Plus[8] is a high-performance chair. The Synchron tilt makes for a well-balanced pattern of movement and for secure comfort. The fine contours are well balanced and timelessly sleek. And you can add your own personal style with Motif and Contour options. Seat depth, sitting height and backrest height are adjustable. When you compose your own Plus[8], you can choose between two different back heights and two different armrests. Top it off with a headrest that can be adjusted in terms of height, depth and angle.



FUNCTIONS AND OPTIONS



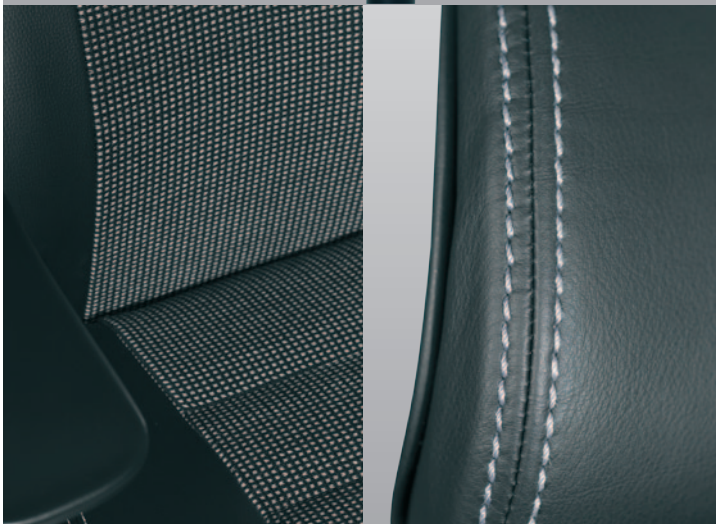
A SMOOTH PATTERN OF MOVEMENT

Synchron is a tilt function that allows the seat and back of the chair to move in a carefully balanced relationship, with a smooth pattern of movement. You can adjust resistance in relation to your own weight. The seat can be tilted forward and locked in any position.



ENCOURAGES MOVEMENT

FreeFloat is a tilting mechanism that encourages movement. The seat and the backrest of the chair follow your movements independently of each other. The seat can be tilted forward. Resistance is adapted to your body weight. Locks in any position.



CHARACTERISTIC SEAMS

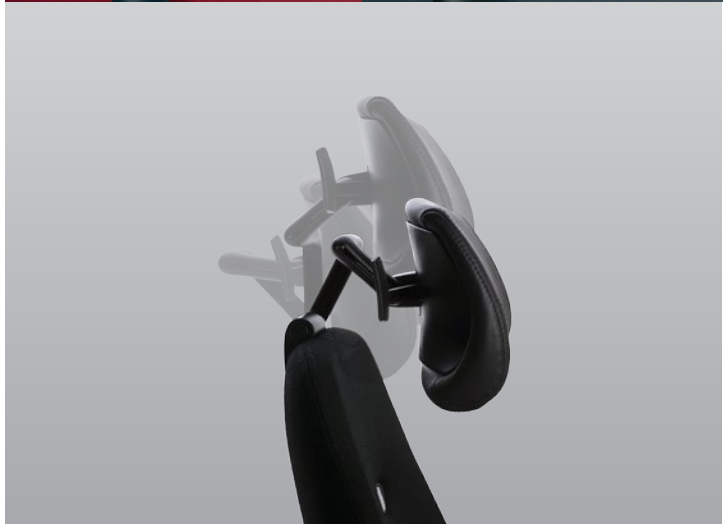
With Motif the chair is given a number of characteristic seams across the seat and back and piping all around. The basic level of comfort is enhanced by extra padding and softer seating.

Contour has fine needlework with black, white or silver grey threads sewn into the piping (this option applies to chairs upholstered in leather or the Comfort fabric).



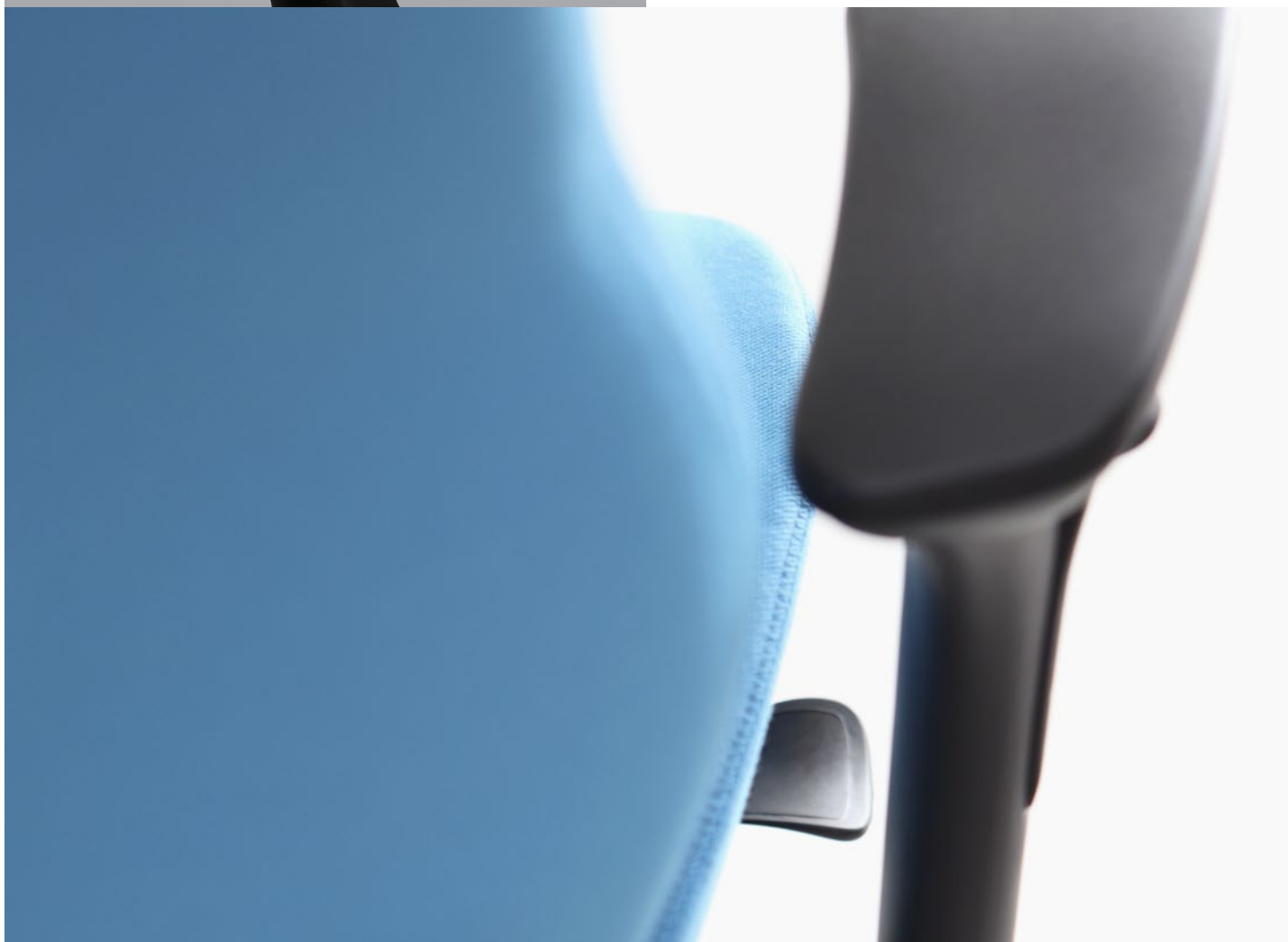
CHOOSE ARMRESTS

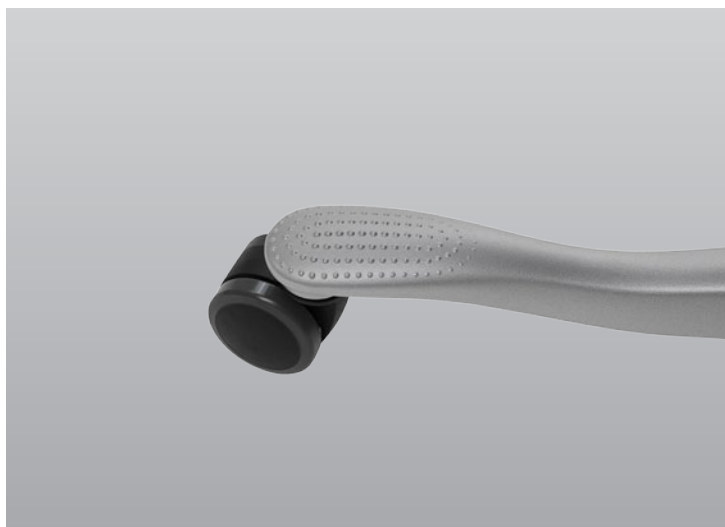
Armrest 2 is adjustable for width and height with soft padding on the upper side. Armrest 4 is filled with TechnoGel and domed for maximum support and pressure relief, without locking the arm in a fixed position. This armrest is also adjustable in terms of depth and angle to the body.



HEADRESTS

The anatomical headrest is available as an option for all versions. The headrest is articulated, capable of independent movement, vertically adjustable, and the angle can be changed forwards and backwards.





FIVE-STAR BASE WITH FOOTREST

Most of us rest our feet from time to time on the chair's five-star base. With our textured pattern, the foot gets a better hold and the five-star base keeps its good looks. In addition to black the five-star bases are available in silver or polished aluminium.







8770 / 6770

8772 / 6772

8774 / 6774

8782 N78 / 6782 N78

8784 N78 / 6784 N78

8770 / 8772	450	400-470	400-530	410-530	○	- / •	180-300	-	•	•
8774	450	400-470	400-530	410-530	○	•	190-310	-	•	•
8780 / 8782	450	400-470	400-530	410-530	○	- / •	180-300	-	•	•
8784	450	400-470	400-530	410-530	○	•	190-310	-	•	•
6770 / 6772	450	400-470	400-530	410-530	○	- / •	180-300	•	-	•
6774	450	400-470	400-530	410-530	○	•	190-310	•	-	•
6780 / 6782	450	400-470	400-530	410-530	○	- / •	180-300	•	-	•
6784	450	400-470	400-530	410-530	○	•	190-310	•	-	•

Plus[6] & Plus[8] – DESK CHAIR

MECHANISM Plus[8] with Synchron-mechanism: When tilting the chair, the back is angled more than the seat at a ratio of 1:1.5, lockable tilting movement in any position, adjustable tilting resistance. Plus[6] with FreeFloat-mechanism: The seat and back move independently of each other, lockable function in any position, adjustable tilting resistance. **SEAT** Adjustable seat angle with forward position, adjustable sitting height (gas spring), adjustable seat depth. Options: Soft-version with extra padding. Contrasting upholstery Motif and Contour. **BACK** Adjustable backrest height, adjustable backrest angle. Options: Soft-version with extra padding. Contrasting upholstery Motif and Contour. **PADDING** Polyether. **HEADREST** Options: gradually adjustable for height, depth and angle. Options: polished headrest post. **ARMRESTS** Options: type 2 with armrest pad; 240 x 90 mm in black polyurethane, adjustable in height (180-300 mm) and width (40 mm/side). Options: type 4 (dynamic) with armrest pad 250 x 110 mm in mtrl TechnoGel, adjustable in height (190-310 mm), width (40 mm/side), depth (100 mm) and angle (15°). **FIVE-STAR BASE** Black plastic five-star base with 5 castors for hard and soft flooring. Options: polished or silver aluminium five-star base and glides. **OTHER OPTIONS** Single footring. Extended gas spring (KGAS80: sitting height 480-670 mm, KGAS190: sitting height 590-860 mm). Styling: polished finish on selected elements. **BELONGS TO FAMILY** Visitor and conference chairs Plus[cv]. **UNIT** mm. **DESIGN** Johan Larssvall, Torbjörn Höjer.



We believe in making life better at work. At Kinnarps, we do more than just sell furniture. With products and services to match your needs, we deliver inspiring and effective workspace solutions to help your organisation prosper.
www.kinnarps.com

