

Timeless and stylish modular sofa

Gino is a modular sofa that is easy to place in a variety of working or learning spaces. The simplicity of its shape gives it the flexibility for spaces such as canteens, coffee shops and meeting rooms.

A complete range of sofas in a wide choice of versions and finishes, so you can easily create a customised solution. It can be connected and detached. The simple and classic look of this sofa allows it to seamlessly blend with other products and solutions.

Gino offers several functional options, making it easy to customise for different areas of use. There is also a selection of underframes to choose from, depending on the look and function you want – classic tubular legs, a trendy sledge, curved wooden legs or sturdy castors for easy moving. Gino has a gap between the seat and back, which makes it easy to wipe and keep clean.

Fasteners are available as an option to attach it to the floor, which makes it a safe choice in e.g. learning spaces. It's also a sustainable alternative, with a design created to last and a limited number of components, all of which can be replaced, separated and recycled.

Choose from the hundreds of fabrics in Kinnarps Colour Studio, which all meet stringent quality requirements.

CERTIFICATES



 EN 16139
 NEPD-4597-3852-EN

DESIGNER
 Kinnarps Studio

MORE INFORMATION
kinnarps.com

Versions



GIP1



GIP2



GIP3



GIP0



G11



G12



G13









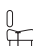

G10



G11A



G1A1

| Gino |  |  |  |  |  |  |  |  |
|-------------|---|---|---|---|---|---|---|---|
| GIP1 | 600 | 515 | | 460 | 600 | 515 | 400* | 10 |
| GIP2 | 1200 | 515 | | 460 | 1200 | 515 | 400* | 15 |
| GIP3 | 1800 | 515 | | 460 | 1800 | 515 | 400* | 23 |
| GIP0 | 515 | 515 | | 460 | 515 | 515 | 400* | 9 |
| G11 | 600 | 663 | 853 | | 600 | 520 | 400* | 16 |
| G12 | 1200 | 663 | 853 | | 1200 | 520 | 400* | 27 |
| G13 | 1800 | 663 | 853 | | 1800 | 520 | 400* | 38 |
| G10 | 663 | 663 | 853 | | 515 | 515 | 400* | 21 |
| G11A | 668 | 663 | 853 | | 585 | 520 | 400* | 23 |

* The measurement refers to a loaded seat.

Unit mm, kg.

Functions & options



LINKABLE

Gino is easy to link and unlink with optional connectors. Everything for functional solutions that are easy to adapt to your needs and situation.



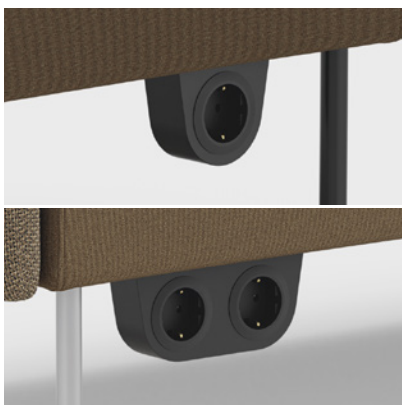
FLOOR ANCHORING TUBULAR LEGS

Tubular leg brackets are available as an option to anchor the sofa to the floor. They keep the sofa firmly in place – a safe solution in e.g. learning environments.



FLOOR ANCHORING SLEDGE FRAME

Fasteners are also available as options for sledge frames, so they can also be anchored to the floor to keep the sofa firmly in place.



POWER SOCKET SINGLE/DOUBLE

Add power sockets to the seating units for a convenient and easily accessible power supply. A double socket is also available as an option, offering more power outlets.



REMOVABLE UPHOLSTERY

Gino is available with removable upholstery as an option. This makes it easy to change the fabric on the sofa when needed. Choose one of our washable fabrics, so the upholstery can be cleaned as well.



ARMREST END PANEL

Gino is available with and without an armrest end-panel (W 410 mm, D 650 mm, H 725 mm). They define the seating area and provide comfortable support to lean against. Choose between one or two armrests, for an open finish on one side and closed on the other.



ARMREST FOR CONNECTING

Upholstered armrest end-panel for placement between connected sofa sections. It defines the seating area for a personal space.



GAP AT THE BACK

Gino has a gap between the seat and back, which makes it easy to wipe and keep clean.



CONTRASTING FABRIC SEAT CUSHION

The sofa is available with contrasting fabric on the seat. This gives the sofa an interesting and personal look.

Colours & materials

Kinnarps Colour Studio (KCS) is our range of materials for offices, schools and healthcare facilities, with a focus on sustainability, quality and harmony. It offers attractive materials that have been carefully tried and tested for suitability and sustainability in different types of spaces. The wide range makes it easy to find the look and functionality you want. Wood, metal, plastic, and textiles, colours and patterns that are easy to mix and match with each other and the rest of the interior design. This is a well-thought-out range that provides a harmonised and sustainable overall impression, and makes it possible to choose the right material and the right colour for the right place and activity.

For more information about colours and materials, see kinnarps.se/kcs.

Tubular legs



Silver



White



Black

Sledge frame



Silver



White



Black

Wooden legs



Birch

Castors



Silver



White



Black