

## Simple and stylish meeting table and dining table

With Asto, it's easy to arrange a good place for short meetings, briefings or breaks in different types of working environments or in canteens. The dining/meeting table's simple and stylish design will stand the test of time. Asto is suitable for various types of planned or spontaneous meetings, for coffee breaks or in social spaces. Choose between round pillar tables and rectangular tables, with tabletops in several different sizes. Choose material from Kinnarps Colour Studio.

### CERTIFICATES

Möbelfakta



NEPD-9939-9878

EN 15372

### DESIGNER

Björn Alge

### MORE INFORMATION

[kinnarps.com](http://kinnarps.com)

## Functions & options



### SUSPENSION FRAME

Two versions of suspension frame are available as an option, UCH1 and UCH3.



### SCREW GLIDES

Legs with levelling screws compensate for uneven floors.

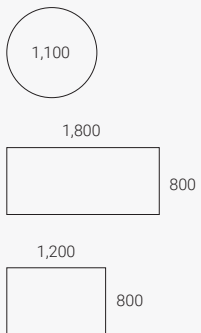


### MARMOLEUM

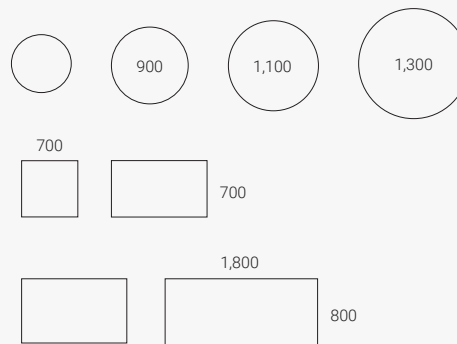
Pleasantly warm, sound-damping tabletop. The patterned surface makes it more forgiving.

## Dimensions and technical specifications

### Tables with marmoleum



### Tables with laminate and veneer



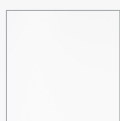
# Colours and materials

Kinnarps Colour Studio (KCS) is our collection of materials for offices, schools and healthcare facilities, with a focus on sustainability, quality and harmony. It offers attractive materials that have been carefully tried and tested for suitability and sustainability in different types of spaces. The wide range makes it easy to find the look and functionality you want. Wood, metal, plastic, and textiles, colours and patterns that are easy to mix and match with each other and the rest of the interior design. This is a well thought-out range that provides a harmonised and sustainable overall impression, and makes it possible to choose the right material and the right colour for the right place and activity.

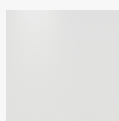
**Tabletops and underframes** Asto is available in a wide choice of materials and colours.

For more information about colours and materials, please visit [kinnarps.com/design-tools/colours-materials/?type=soft\\_materials](https://kinnarps.com/design-tools/colours-materials/?type=soft_materials).

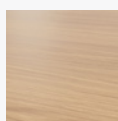
## Laminate



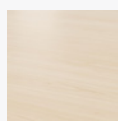
White



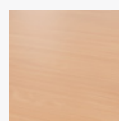
Light grey



Oak

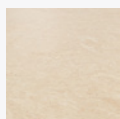


Birch

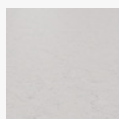


Beech

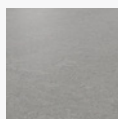
## Marmoleum



Beige

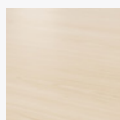


Light grey



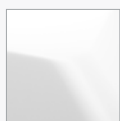
Dark grey

## Veneer

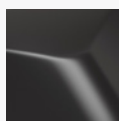


Birch

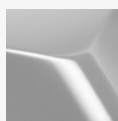
## Metal



White



Black



Silver